

# 17<sup>th</sup> SESSION

## PACIFIC ISLANDS CLIMATE OUTLOOK FORUM (PICOF-17)

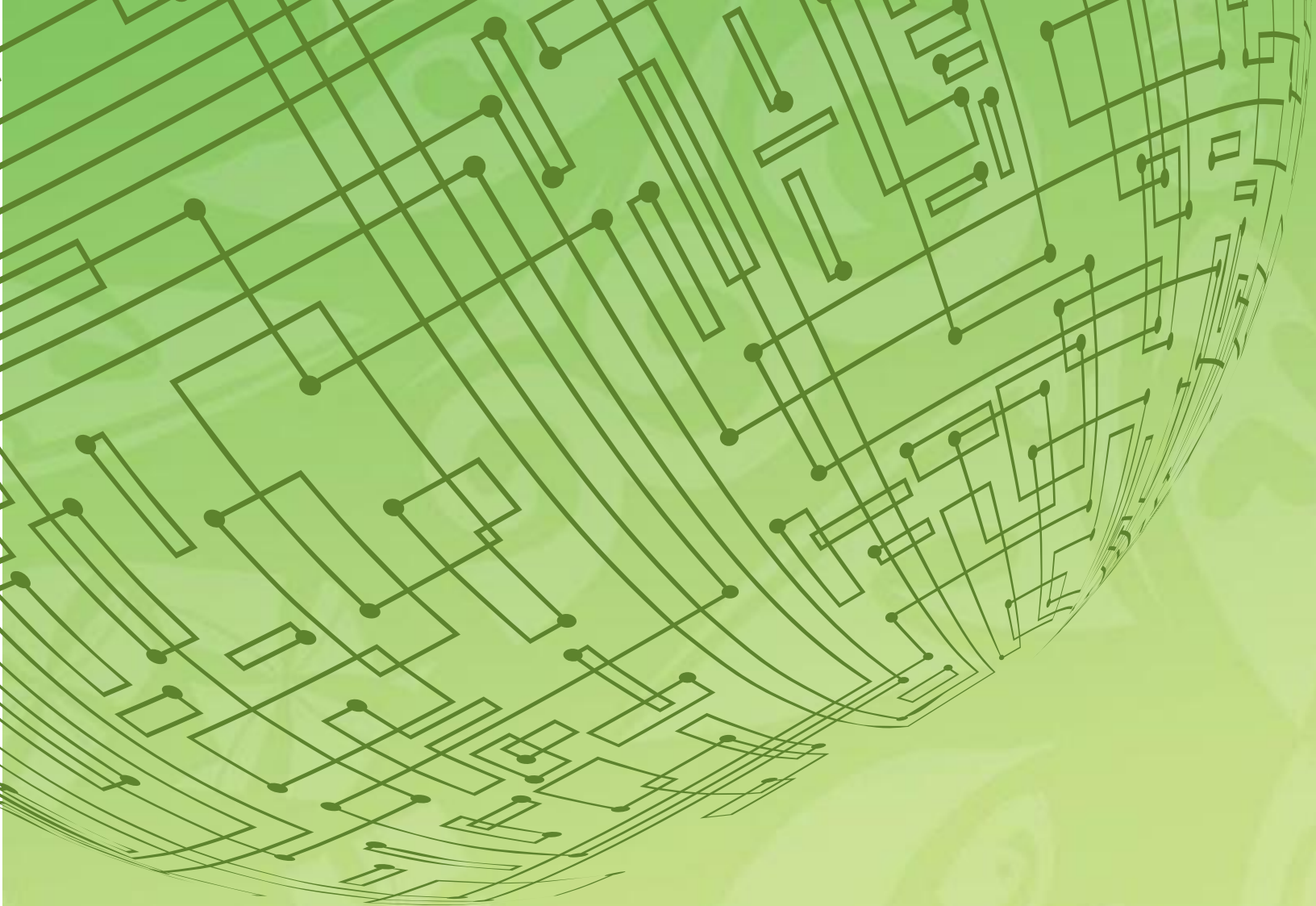
# 22 – 23 October, 2025

Port Vila, Vanuatu



**PACIFIC REGIONAL  
CLIMATE CENTRE NETWORK**





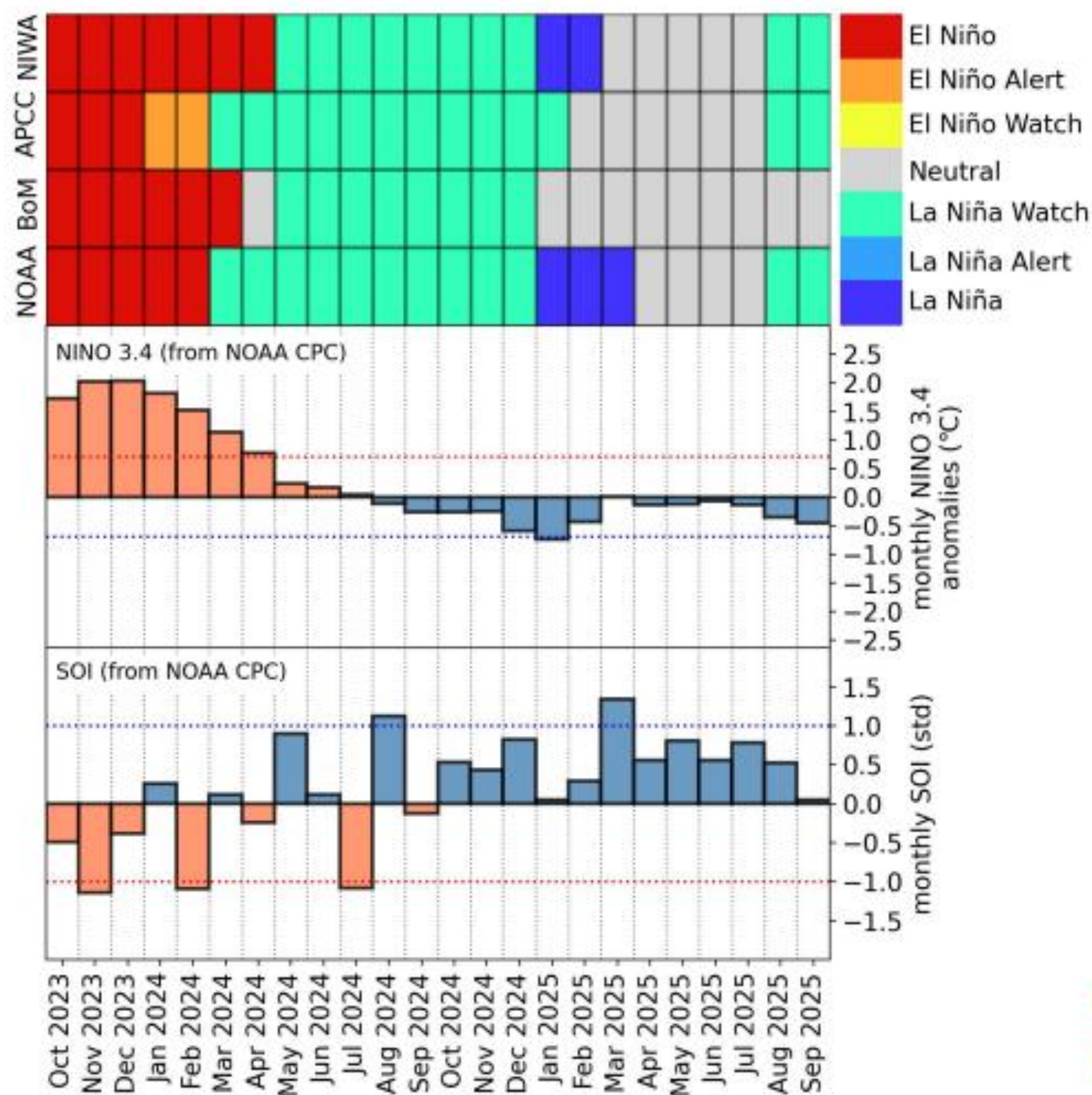
# Micronesia Impacts

Wallace Jacob  
WSO Pohnpei, FSM



# Current State of ENSO

Pacific Regional Climate Centre ENSO tracker



## EL NIÑO/SOUTHERN OSCILLATION (ENSO) DIAGNOSTIC DISCUSSION

issued by

CLIMATE PREDICTION CENTER/NCEP/NWS

9 October 2025

ENSO Alert System Status: **La Niña Advisory**

**“Upgraded” from a La Nina Watch last month**

[ps://www.cpc.ncep.noaa.gov/products/precip/CWlink/MJO/enso.shtml](https://www.cpc.ncep.noaa.gov/products/precip/CWlink/MJO/enso.shtml)

[ps://www.pacificmet.net/enso-tracker](https://www.pacificmet.net/enso-tracker)



-July 24<sup>th</sup>, TC Krosa (12W) developed west of Guam and moved north and strengthened, because of this coastal inundation along west coast of the Marianas from large storm surfs combined with new moon high tides and westerly swells.

- Oct 15, landslide on Guam from a 5.59in(~142mm) of rain that day. Sediments were deposited into Agana Bay.

In September, Kapingamarangi was put in a moderate drought condition. In early October, they were placed in a severe drought condition. Taro patches are starting to turn yellow, and household water tanks are at half, and some are below half.

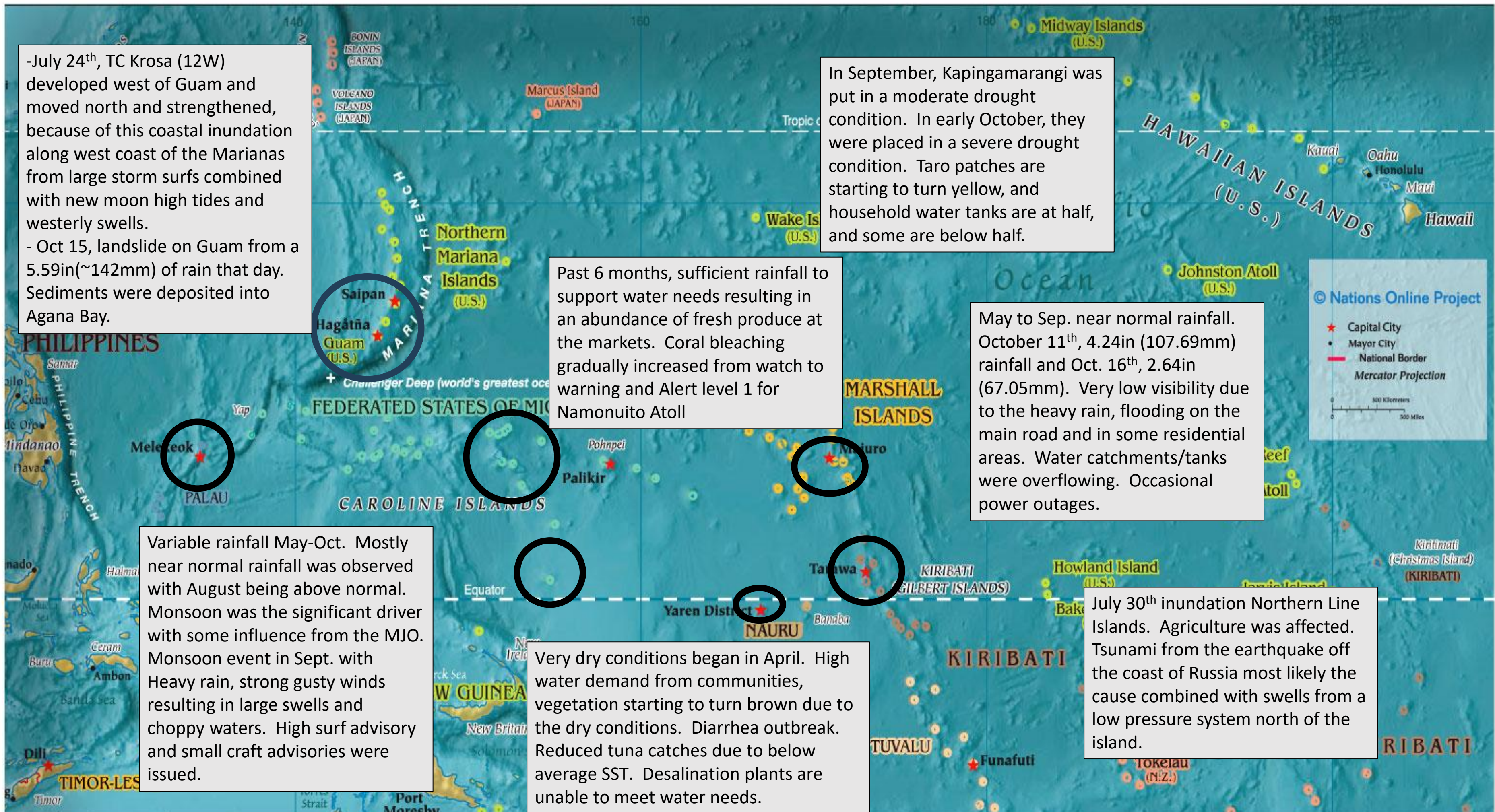
Past 6 months, sufficient rainfall to support water needs resulting in an abundance of fresh produce at the markets. Coral bleaching gradually increased from watch to warning and Alert level 1 for Namonuito Atoll

May to Sep. near normal rainfall. October 11<sup>th</sup>, 4.24in (107.69mm) rainfall and Oct. 16<sup>th</sup>, 2.64in (67.05mm). Very low visibility due to the heavy rain, flooding on the main road and in some residential areas. Water catchments/tanks were overflowing. Occasional power outages.

Variable rainfall May-Oct. Mostly near normal rainfall was observed with August being above normal. Monsoon was the significant driver with some influence from the MJO. Monsoon event in Sept. with Heavy rain, strong gusty winds resulting in large swells and choppy waters. High surf advisory and small craft advisories were issued.

Very dry conditions began in April. High water demand from communities, vegetation starting to turn brown due to the dry conditions. Diarrhea outbreak. Reduced tuna catches due to below average SST. Desalination plants are unable to meet water needs.

July 30<sup>th</sup> inundation Northern Line Islands. Agriculture was affected. Tsunami from the earthquake off the coast of Russia most likely the cause combined with swells from a low pressure system north of the island.






# WSO Palau Early Warning

*This week!*

**POTENTIAL FOR  
LOCALLY HEAVY  
SHOWERS  
&  
GUSTY WINDS**

Contact relevant  
agencies for guidance

Sep 22-26, 2025



*Wednesday, Sept. 24, 2025*

**IN EFFECT FOR PALAU:  
SMALL CRAFT ADVISORY  
HIGH SURF ADVISORY**

WHAT: LARGE BREAKING WAVES OF 7 TO 9 FT  
WHERE: NORTH AND WEST FACING REEFS

**IMPACTS:**

- CONDITIONS WILL BE HAZARDOUS TO SMALL CRAFT
- DANGEROUS SWIMMING AND SURFING CONDITIONS AND LOCALIZED BEACH EROSION

Contact relevant  
agencies for updates

WSO Palau social media page: <https://www.facebook.com/wsopalau/videos/1769323820622256>

## Monsoon Event Sep 22 to 26, 2025

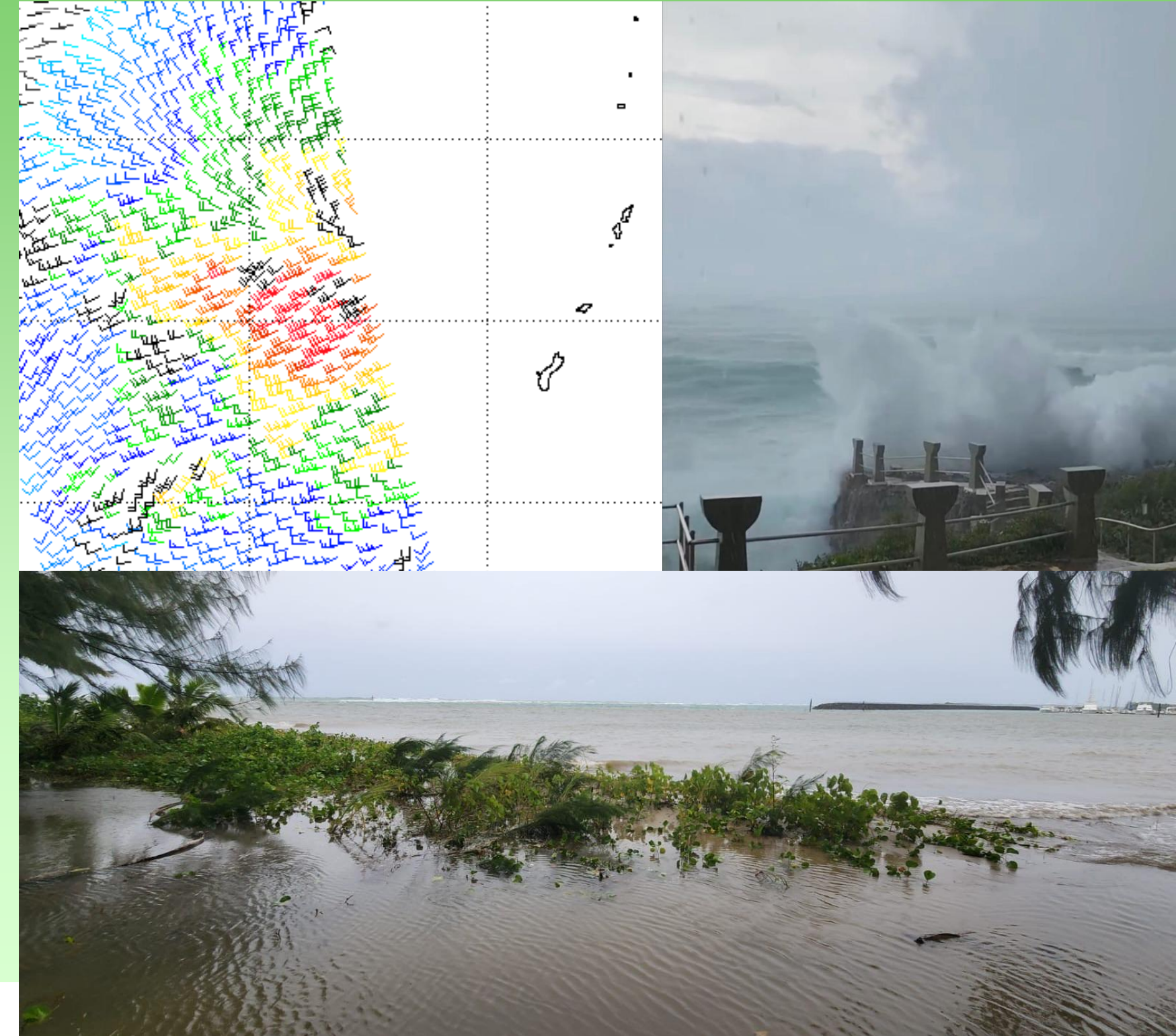
WSO Palau Early Warning Social Media Video Card  
Analytics



# Marianas: Notable Impacts Since April 2025

## July 24-27: Tropical Cyclone Krosa (12W)

- Developed just west of Guam on July 24... moved north and intensified
- Coastal inundation reported along west coasts of the Marianas
  - New moon tides
  - Record high sea levels (Apra Harbor tide gauge) from July 15 – 20 & July 23-25
  - Large “storm surf” with short-period westerly swells and wind waves > 3-4 meters
- Unknown impacts to the far northern islands of the CNMI as Krosa intensified and pass closer



**Clockwise from top left: Scatterometer data of developing Krosa, surf from Taga Beach, Tinian CNMI, and coastal inundation in Agat, Guam on July 25<sup>th</sup>**



# Marianas: Notable Impacts Since April 2025

## Oct 15: Landslide / Slope Failure on Guam

- Torrential rains triggered a landslide at ~4:30am on October 15<sup>th</sup> on the main commute road on Guam
- 5.59 inches (~142mm) of rain fell during the day, much of it in a short window during the early morning hours
  - Rain rates reached 5in/hr or ~127mm/hr at times
- Horrendous traffic during the morning commute
- Large sediment deposit into Agana Bay
- Investigation in progress as a construction site and new development sits on the cliff top above landslide location



**Left to right: Landslide on October 16<sup>th</sup> courtesy of Rick Cruz at PDN, screenshot of snarled traffic during the morning commute courtesy of WFO Guam's Landon Aydlett**

Source: Rick Cruz at Pacific Daily News (left) and Landon Aydlett (right) from NOAA NWS Guam

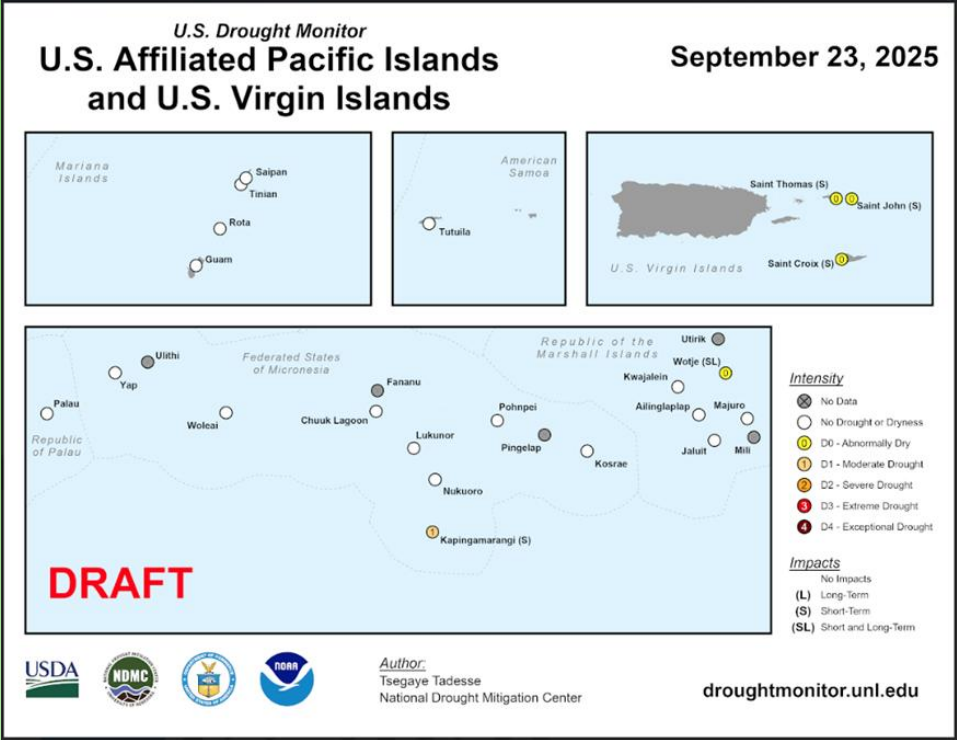


☁️ Chuuk's abundance of produce due to sufficient rain.





# Kapinga drought condition

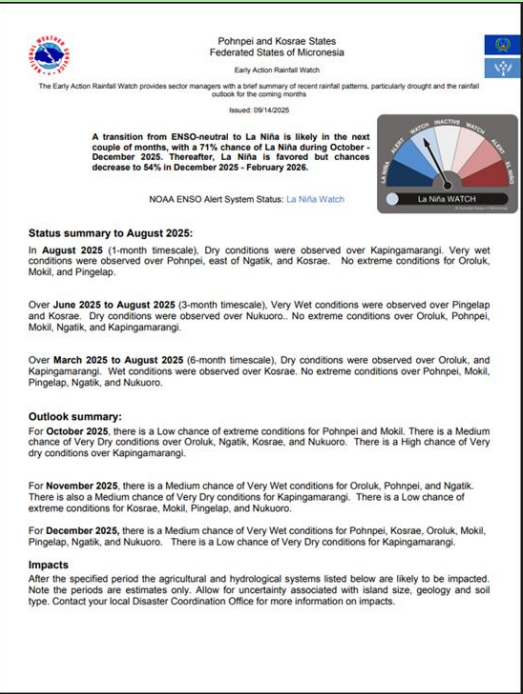


# Kapingamarangi

## DRY CONDITIONS POSSIBLE OCT-DEC

PLEASE CONSERVE WATER





Gov’t has 18 250gl (950 liters) tanks full and 2 concrete tanks full.



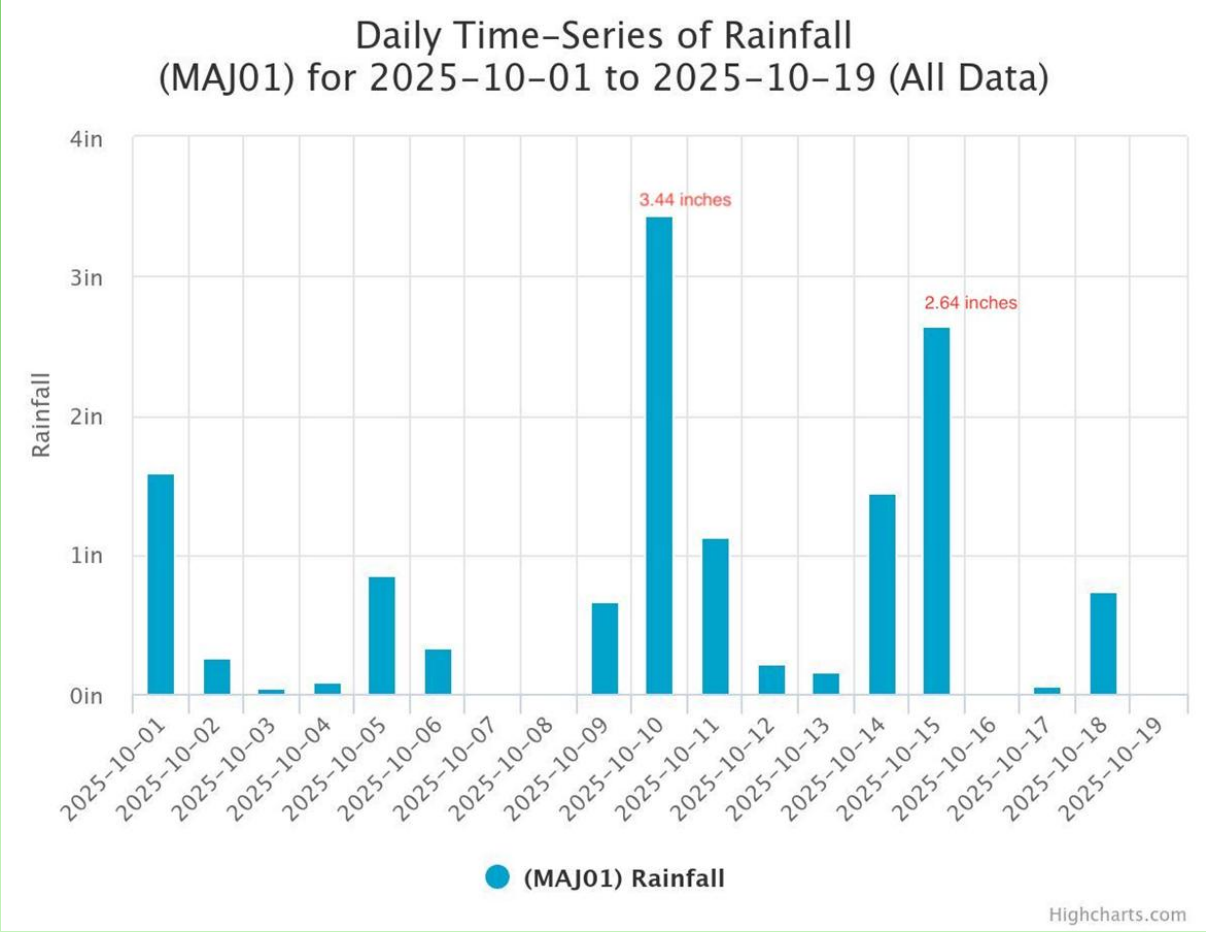


# Nauru: very dry conditions



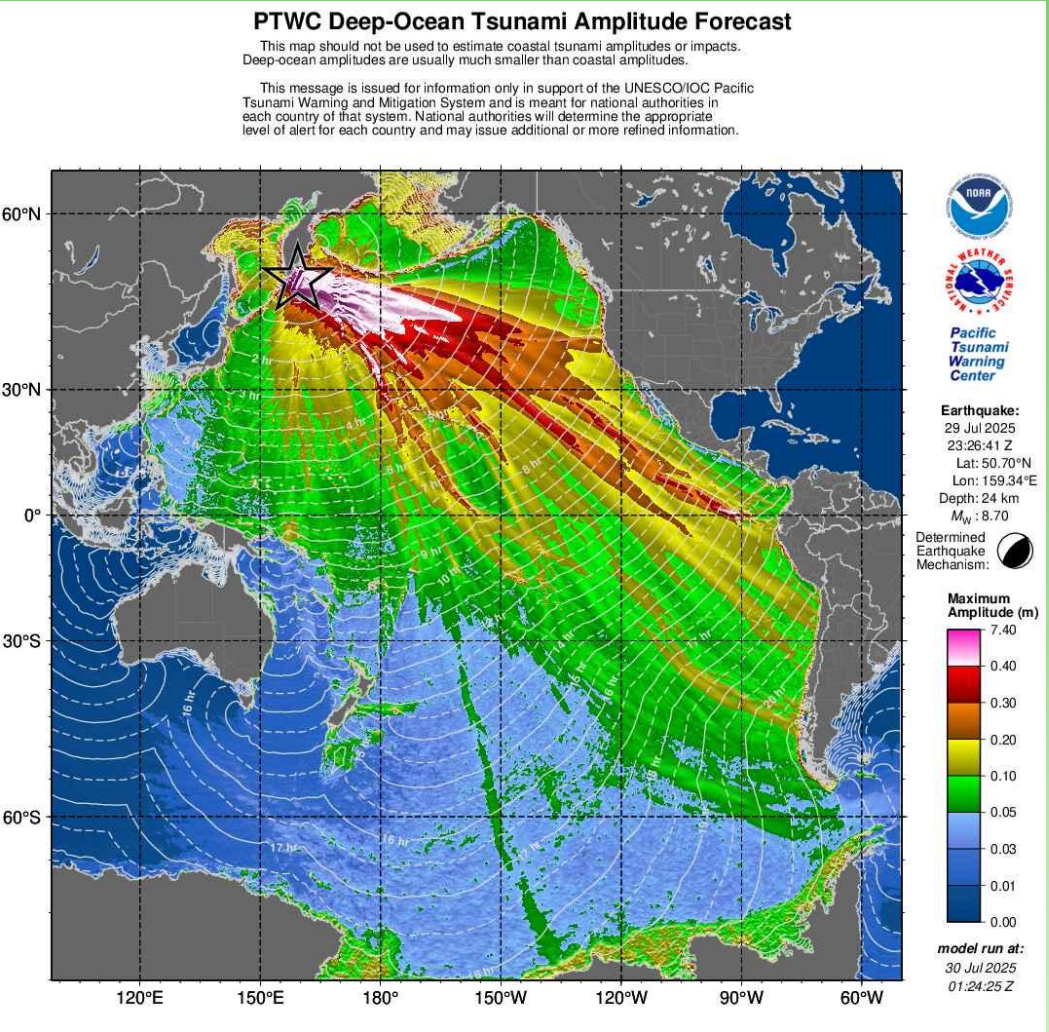
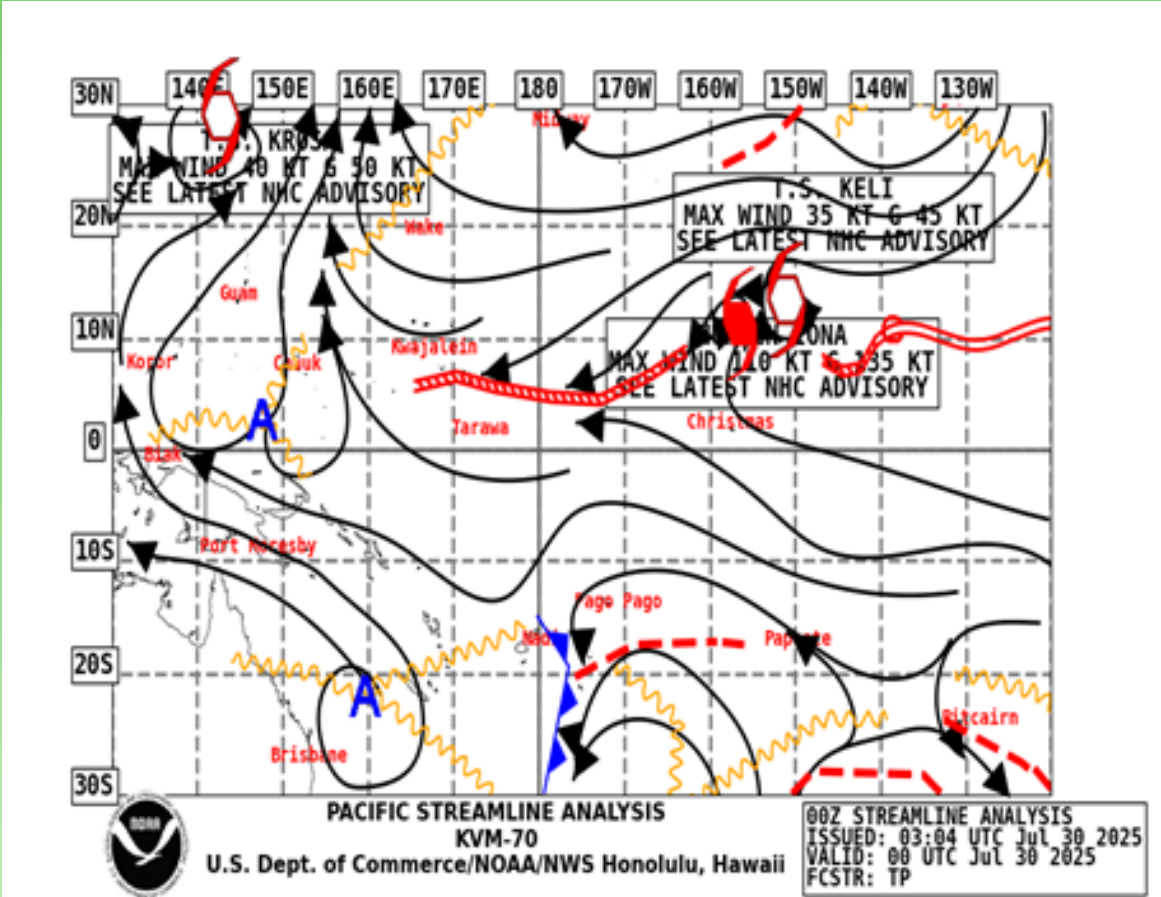


# Majuro's Oct. extreme rainfall event





# Kiribati's inundation event









# THANK YOU!

Micronesia team

[wallace.jacob@noaa.gov](mailto:wallace.jacob@noaa.gov)

[kiku.mochimaru@noaa.gov](mailto:kiku.mochimaru@noaa.gov)

[boyd.mackenzie@noaa.gov](mailto:boyd.mackenzie@noaa.gov)

[nover.juria@noaa.gov](mailto:nover.juria@noaa.gov)

[co@met.gov.ki](mailto:co@met.gov.ki)

[rickypkb95@gmail.com](mailto:rickypkb95@gmail.com)

[pr.wfo.guam@noaa.gov](mailto:pr.wfo.guam@noaa.gov)



**PACIFIC REGIONAL  
CLIMATE CENTRE NETWORK**